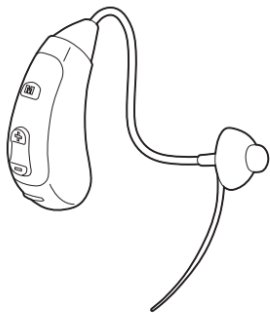


VHP-902 Hearing Aid

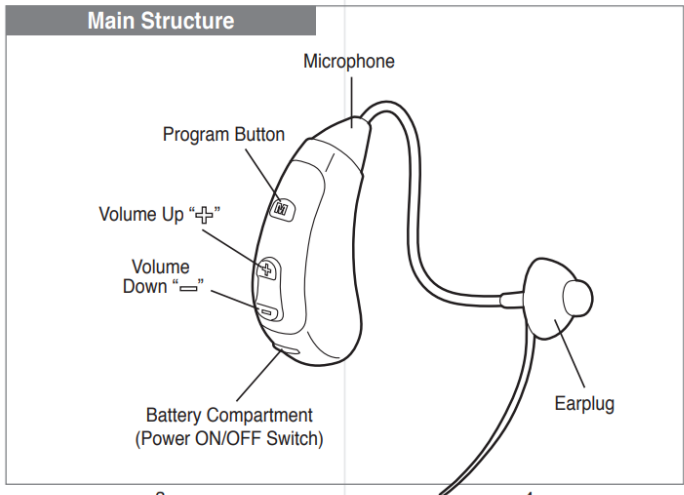


Thank you for choosing VHP-902 hearing aid, it will be greatly satisfied to you by its small size and low distortion. If you have any questions, you can ask the local vendors, they will be happy to help you, or directly ask our factory technical service department. Please read the manual carefully before using, under the guidance of a doctor

Operation Instructions

- 1 -

- 2 -



- 3 -

- 4 -

Technical Data

MODEL	ITEM	UNIT	PARAMETER INDEX	
			VALUE	TOLERATE
VHP-902	Size	mm	34 x 15 x 9.7	
	Weight	g	3	
	Working Voltage	V	DC 1.4V	+ 5%, - 10%
	Working Current	mA	≤ 1.8	
	Frequency Response	Hz	500 - 3800	
	Maximum Saturation Acoustic Output	dB	≤ 129	+ 3dB
	Hi-frequency average value	dB	118	± 4dB
	Full-on Acoustic Gain	%	36	± 5dB
	Total Harmonic Distortion	dB	< 10%	
Equivalent Input Noise	dB	< 29		

Device Safety Level Inner Power Level: B

- 5 -

- 6 -

Usable Range

For Air-Conductivity hearing loss person

Taboo

- Not for otitis media or ear maturation.
- Should be consulting a qualified audiology or otology doctor as following case:
 - Obvious congenital or traumatic ear canal malformation
 - It has active ear discharging or the secretion of history during last 90 days
 - It has suddenly or progressive hearing loss during last 90 days
 - Acute or chronic vertigo
 - Air-bone gap is equal to or greater than 15 dB at pure tone 500Hz, 1000Hz and 2000Hz.
 - Cerumen embolization or ear canal with foreign body
 - Ear pain or discomfort
- Ear pain or discomfort

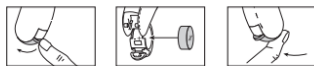
- 7 -

Warning

- ⚠ 1. Choose appropriate size of earplugs, and tight in the ear, in order to avoid hearing aid whistle
- ⚠ 2. Gradually increase the volume, to avoid damage ears by a sudden increasing volume.
- ⚠ 3. Turn it down as soon as possible in order to hear clearly.
- ⚠ 4. Do not force pulling or distorting earphone and headphone line, so as not to break
- ⚠ 5. Please shut down when not using; if long time not to use, please take out the battery, in order to avoid the battery decay erode hearing aid components.
- ⚠ 6. After using, if there is a small volume, noise and distortion, please replace battery in time.
- ⚠ 7. Please regularly clean earplugs to ensure the normal use of hearing aid.
- ⚠ 8. Please take off hearing aid before shampoo, bath, hair makeup.

- 8 -

- ⚠ 9. Please let hearing aid keep away from shock, drop, moisture, high temperature as well as direct sunlight.
- ⚠ 10. Please make hearing aid keep away from strong magnetic fields, the source of the noise, chemicals, etc.
- ⚠ 11. Keep talker as close as possible.
- ⚠ 12. Selection of hearing aid by hearing aid consultant, if any doubts, please consult a qualified audiology or otology doctor.
- ⚠ 13. Change hearing aid regularly, it's usually 3-6 month to adapt.
- ⚠ 14. Keep hearing instruments, batteries and accessories out of children's reach.
- ⚠ 15. It should be required to deal hearing aid scrapped with the relevant state laws and regulations.



- Swivel opens the battery compartment door, if not already open. Place the proper size battery so that the "⊕" symbol on the battery matches the "⊕" marked on the battery compartment.
- Gently close the battery compartment by pressing the bottom of the door upward with your fingertip.
- Adjust the volume button "⊖" to the lowest before using. (Fig. 1)
- When the battery compartment is completely closed, the instrument is "ON" (Fig. 1).
- Opening the battery compartment to the first stop (Fig. 2) means the instrument is turned "OFF". (Fig. 2)

- 9 -

- 10 -

- Choose appropriate size earplug, and wear hearing aid behind the ear as shown on Figure 3.



- Regulate the volume to proper level slowly.



- Volume control:
 - Press and hold "⊕" to turn up the volume continuously, and you will hear tips sound "Beep". When the sound reach the peak, you will hear tips sound "Beep-Beep".
 - Press and hold "⊖" to turn down the volume continuously, and you will hear tips sound "Beep". When the sound reach the bottom, you will hear tips sound "Beep-Beep".
 - Program Button
In turning on state, it is low-frequency level in normal environment. Press the button ("M") to switch to



high pitch, also you will hear tips sound "Beep", and press again to switch to basis, you will hear tips sound "Beep-Beep" as well.

Maintenance

- Clean your hearing aid by soft and dry cloth every day
- Carefully remove the earwax blocking earplug hole or water vapor (beads), using special tools to clean the hearing aid's earplug hole.

- 12 -

Troubleshooting

Problem	Possible Solution
Sound is distorted	Decrease volume. Replace empty battery. Clean earplug.
Sound is weak	Replace empty battery. Increase volume. Replace microphone. Check earplug whether blocked or not.
Hearing aid emits whistling sounds	Reinsert the earplug until it fits securely. Decrease volume. Clean earplug.
Hearing aid emits signal tones	Gently close battery compartment completely. Replace empty battery.

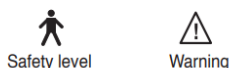
- 13 -

- 14 -

Hearing Aid does not work	Decrease volume. Turn hearing aid on. Gently close battery compartment completely. Replace empty battery. Make sure battery is inserted correctly. Increase volume. Clean earplug. Check microphone whether damaged or not.
---------------------------	--

Consult your Hearing Care Professional or directly contact to us if you encounter further problems.

Label



Safety level

Warning

- ⊕ — Positive polarity of battery
- ⊖ — Negative polarity of battery
- ⊕ ⊖ — volume Up and Down
- M — Program button

ON — Turn on
OFF — Turn off

All photos are for reference only

- 15 -

- 16 -